



# Weekly News

Mrs. Slope's Class ~ October 28 - November 1, 2024

[sslope@rockwoodschoools.org](mailto:sslope@rockwoodschoools.org)

## Language Arts

- Review Consonant Vowel Consonant words.
- Vowels a, e, i, o, u
- past tense -ed
- Retelling in sequence - with details
- singular and plural nouns
- place poems

Heart Words : Review of words learned so far

## Math

Continue Addition and Subtraction strategies and number sense within 10

Focus - subtraction strategy using number line

## Social Studies / Science

Halloween

Declaration of Independence

## Daily Schedule

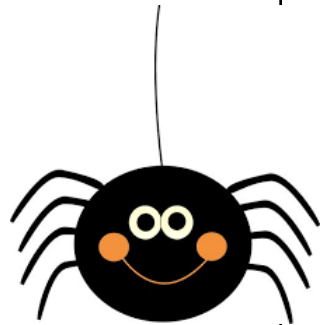
**Monday** – STEM

**Tuesday** – LOT

**Wednesday** - Music

**Thursday**- ART

**Friday** – *No school for students*



## Weekly Information

- Students are permitted to dress in costumes on Thursday, Oct. 31.  
\*See attached flyer
- We will have a small Halloween party on Oct. 31. Treats are optional - if you choose to send... we have **20 students** in our class.
- 

## Daily Homework

- ❖ Guided Reading
- ❖ Fact Fluency practice pages (math)  
Packet is due Thursday 10/31
- ❖ Spelling Words- (were, them) -test  
will be the week of November 4th

--	--

Grade 1  
 October 28-Nov. 1, 2024  
 Lesson Plans

	Monday	Tuesday	Wednesday	Thursday	Friday
PA State Standards	<b>ELA:</b> cc.1.1.1.B, 1.1.1.C, 1.1.1.E1.3.1.A, 1.3.1.B1.3.1.C, 1.3.1.E1.4.1.C, 1.4.1.L1.4.1.R, 1.5.1.C1.5.1.D,1.5.1.F1.5.1.E, 1.5.1.G <b>MATH:</b> cc 2.1.1.B.1, 2.2.1.A.1,2.2.1.A.2,	<b>ELA:</b> cc.1.1.1.B, 1.1.1.C, 1.1.1.E1.3.1.A, 1.3.1.B1.3.1.C, 1.3.1.E1.4.1.C, 1.4.1.L1.4.1.R, 1.5.1.C1.5.1.D,1.5.1.F1.5.1.E, 1.5.1.G <b>MATH:</b> cc 2.1.1.B.1, 2.2.1.A.1,2.2.1.A.2,	<b>ELA:</b> cc.1.1.1.B, 1.1.1.C, 1.1.1.E1.3.1.A, 1.3.1.B1.3.1.C, 1.3.1.E1.4.1.C, 1.4.1.L1.4.1.R, 1.5.1.C1.5.1.D,1.5.1.F1.5.1.E, 1.5.1.G <b>MATH:</b> cc 2.1.1.B.1, 2.2.1.A.1,2.2.1.A.2,	<b>ELA:</b> cc.1.1.1.B, 1.1.1.C, 1.1.1.E1.3.1.A, 1.3.1.B1.3.1.C, 1.3.1.E1.4.1.C, 1.4.1.L1.4.1.R, 1.5.1.C1.5.1.D,1.5.1.F1.5.1.E, 1.5.1.G <b>MATH:</b> cc 2.1.1.B.1, 2.2.1.A.1,2.2.1.A.2,	No School for Student
7:45 - 8:20	Arrival - - Breakfast/ Attendance / Lunch Count /				
8:20 - 8:40	Heggerty/MM Week 10	Heggerty/MM	Heggerty/ MM	Heggerty/ MM	
8:40 - 9:10	95% Core Lesson 7 day 3 Follow Manual	95% Core Lesson 7 day 4 Follow Manual	95% Core Lesson 7 day 5 Follow Manual	95% Core Lesson 7 Review - Test Follow Manual	

9:10 - 9:40	<u>Guided Reading</u> Follow teacher made plans in groups	<u>Guided Reading</u> Follow teacher made plans in groups	<u>Guided Reading</u> Follow teacher made plans in groups	<u>Guided Reading</u> Follow teacher made plans in groups	
9:40 - 10:10	<u>Comp / Vocab</u> O. Identify Characters and sequence of events. A. Teacher read aloud - Where's My Mummy - sequencing activity. E. Participation Project completion.	<u>Comp / Vocab</u> O. Sequence Events. A. Teacher read aloud - Trick or Treat Smell my Feet. E. Participation Project completion.	<u>Comp / Vocab</u> O. Sequence Events. A. Teacher read aloud - Pumpkin Jack - book companion / science activity. Carve pumpkin, "throw it out" in dirt - observe until spring. E. Participation, project completion.	<u>Comp / Vocab</u> O. Sequence Events, text to self / text connection. A. Teacher read aloud-Room on the Broom Complete story element paper E. Check students work and record score.	
10:15 - 10:40  Small Groups	<u>MTSS / Title 1</u> O. To provide intervention and on-level skills where needed A. Provide intervention activities readers E. Teacher observation	<u>MTSS / Title 1</u> O. To provide intervention and on-level skills where needed A. Provide intervention activities readers E. Teacher observation	<u>MTSS / Title</u> O. To provide intervention and on-level skills where needed A. Provide intervention activities E. Teacher observation	<u>MTSS / Title 1</u> O. To provide intervention and on-level skills where needed A. Provide intervention E. Teacher observation	

<b>10:45 - 11:15</b>	<b>Special</b>	<b>Special</b>	<b>Special</b>	<b>Special</b>	
<b>11:15 - 11:45</b>	<b>Lunch</b>	<b>Lunch</b>	<b>Lunch</b>	<b>Lunch</b>	
<b>11:45- 12:15</b> <b>(DUTY WEEK)</b>	<b>Recess</b>	<b>Recess</b>	<b>Recess</b>	<b>Recess</b>	
12:20-12:45	WINNERS Small groups, decodable readers, fluency , book bins.	WINNERS Small groups, decodable readers, fluency , book bins.	WINNERS Small groups, decodable readers, fluency binders, book bins.	WINNERS Small groups, decodable readers, fluency binders, book bins.	
12:45 - 1:45 <b>DAILY</b> Moby Max Fact Practice  Addition Rocket Math Daily	Math O. Use number bonds to subtract. A. Practice skill using workmats. Practice skill independently. E. Participation and response. Check students work.	Math O. Using number bonds to subtract A. Use workmats to practice skill - explore addition to subtract. Practice independently. E. Participation and response. Check students work.	Math O. Use number bonds to subtract Assess addition fluency A. Monster Math - assessment. Practice using mats Practice using number bonds using sheets Math fact practice E. Participation and response. Check students work.	Math O. Fact fluency practice. A.Moby Max E. Monitor students progress  HALLOWEEN PARTY	

1:45 - 2:20	Bridge to Writing Wk 6 - Day 1 See Manual	Bridge to Writing Wk 6 - Day 2 categorize See Manual	Bridge to Writing Wk 6 day 3 See Manual	Halloween Parade	
2:20-2:30	Brain Bins	Brain Bins	Brain Bins	Brain Bins	
2:30	Prepare for dismissal / distribute folders / pack				