

Algebra 1B - Chapter 4

Sept/Oct. 2024

Week Oct 7-11 on lesson overview --ALGEBRA 1B

Monday - Notes using BPW pg. 71 Section 4.6 on arithmetic sequence link to writing an equation where domain x is the “term” and y is the pattern output.

Tuesday - Use Dynamic Classroom exercises to practice # 7-12, 19,23, 29-33 pg 224 section 4.6

Wednesday - Notes using BPM pg 73 Section 4.7 on function notation for domain and range in piecewise graphs.

Thursday - Use Dynamic Classroom exercises to practice # 1-10 pg 232 section 4.7

Friday - After review of homework, have a **quiz** on domain, range, patterns, and piecewise functions. Students are permitted notes.

Algebra Keystone Standard for the Week Oct 7-11

MODULE 2—Linear Functions and Data Organizations

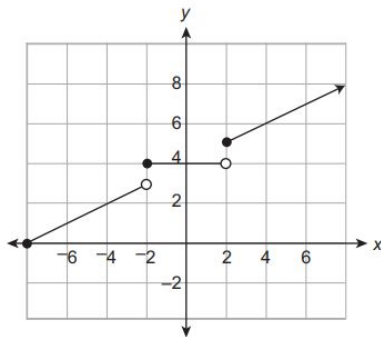
ASSESSMENT ANCHOR

A1.2.1 Functions

Anchor Descriptor	Eligible Content	PA Core Standards
A1.2.1.1 Analyze and/or use patterns or relations.	A1.2.1.1.1 Analyze a set of data for the existence of a pattern and represent the pattern algebraically and/or graphically.	CC.2.2.8.C.1 CC.2.2.8.C.2 CC.2.2.HS.C.1 CC.2.2.HS.C.2 CC.2.2.HS.C.3 CC.2.4.HS.B.2
	A1.2.1.1.2 Determine whether a relation is a function, given a set of points or a graph.	
	A1.2.1.1.3 Identify the domain or range of a relation (may be presented as ordered pairs, a graph, or a table).	

Standard A1.2.1.1.3

The graph of a function is shown below.



Which value is **not** in the range of the function?

- A. 0
- B. 3